

WE RECOMMEND THESE CONNECTORS FOR OPTIMAL SERVICE LEVEL

Preferred Part

- SHORT LEAD-TIMES
- LOW MOQs
- QUICK SAMPLING
- AVAILABLE AT DISTRIBUTION

Preferred Part
77311-101-02LF
77311-101-03LF
77311-101-04LF
77311-101-05LF
77311-101-06LF
77311-101-07LF
77311-101-08LF
77311-101-09LF
77311-101-10LF

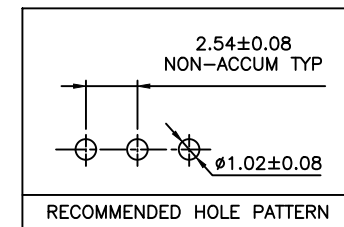
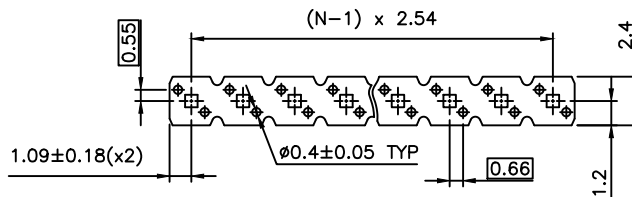
PLATING _____
1 = 0.76µm GOLD/GXT ON CONTACT AREA
2µm TIN MIN ON TAIL
1.27µm Ni MIN UNDERLAYER

PIN STYLE _____

RoHS COMPATIBLE SEE NOTE 6

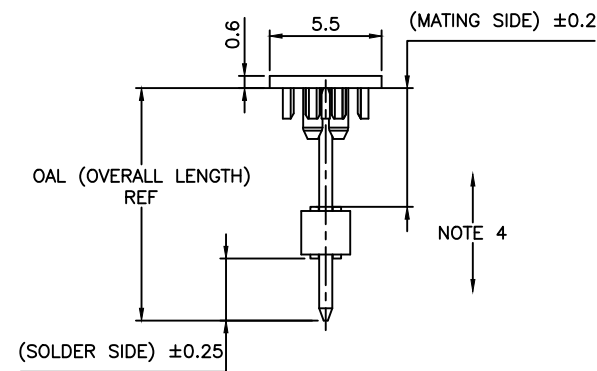
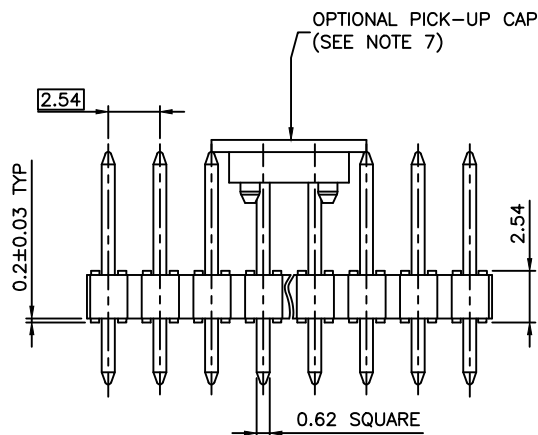
TOTAL NB OF POSITIONS _____

PACKAGING : - = POLYBAG



NOTES:

1. HOUSING MAT'L : HIGH TEMPERATURE THERMOPLASTIC. UL94V-0 COLOR: BLACK
2. PIN MATERIAL : PHOSPHOR BRONZE
3. BERGSTIK PRODUCT PACKAGED IN POLYBAGS. BERGSTRIK PRODUCT PACKAGED PER REELS.
4. 9N MIN RETENTION IN EITHER DIRECTION
5. TO DETERMINE DIMENSIONS :
N = NUMBER OF POSITIONS PER ROW
EXAMPLE : 8 POS N x 2.54 = 20.32mm
6. RoHS COMPATIBLE PRODUCT SPECIFICATIONS
 - a - PLATING:
 - "LF" MEANS THE PRODUCT IS LEAD-FREE, 2µm MINIMUM MATTE TIN OVER 1.27µm MINIMUM NICKEL UNDERPLATE.
 - b - MANUFACTURING PROCESS COMPATIBILITY
 - THE HOUSING WILL WITHSTAND EXPOSURE TO 260°C ±5°C SOLDER BATH TEMPERATURE FOR 5 SECONDS IN A WAVE SOLDER APPLICATION WITH A 1.6mm MIN THICK CIRCUIT BOARD.
 - REFLOW COMPATIBLE
 - c - LABELING:
 - MEETS PACKAGING SPECS AS PER GS-14-920
 - d - LEGAL STATEMENT: SEE GS-47-0004
7. THIS PART SERIES IS NOT INITIALLY INTENDED FOR AUTOMOTIVE APPLICATIONS. ADDITIONAL FEES ARE CHARGEABLE FOR ANY ADDITIONAL QUALIFICATION AND TEST REPORTS PERFORMED OUTSIDE THE SCOPE OF THE STANDARD PRODUCT SPECIFICATIONS.
8. UNLESS OTHERWISE APPROVED BY AMPHENOL, ALL PARTS AND COMPONENTS ARE DESIGNED & BUILT ACCORDING TO AMPHENOL'S SPECIFICATIONS WHICH ARE SUBJECT TO CHANGE WITHOUT NOTICE.



mat'l. code SEE NOTES				surface ISO 1302 ✓	tolerance ISO 406 ISO 1101	projection mm	product family BERGSTIK			
ltr	ecn no	dr	date	tolerances unless otherwise specified			title			
DE	F-55486	DDE	25.04.16	angles	linear	.X ±0.3 .XX ±0.15 .XXX ±0.05	UNSHR.HEADER STR SR TMT			
CY	F-39850	DDE	23.01.13			scale 5:1				
DA	F-49467	DDE	23.10.12	dr	D.LEGRAND	01.01.24	dwg no			
DB	F-49625	LMU	23.10.31	engr	J.COMPAGNON	01.01.24	sheet 1 of 4			
DC	F-52795	DDE	24.09.04	chr	J.COMPAGNON	01.01.24	77311			
DD	F-54440	DDE	25.01.27	appd	JF.NOTTEAU	01.01.24	A3			
sheet	revision	DE	CD	A	T		type			
index	sheet	1	2	3	4		CUSTOMER Drawing			

EXTENDED RANGE

PRODUCT NUMBER
77311-YXX-XXLFPLATING SEE BELOW
(AS AVAILABLE)RoHS COMPATIBLE
SEE NOTE 6, SHEET 1

TOTAL NB OF POSITIONS 01 TO 36

PIN STYLE SEE SHEET 4
(AS AVAILABLE)OPTION LETTER SEE ON RIGHT
(MAY BE SUBJECT TO TOOLING FEES)

OPTIONS :

BLANK = POLYBAG PACKAGING

K = TAPE & REEL PACKAGING, WITHOUT PICK UP CAP, AS AVAILABLE

A = TAPE & REEL PACKAGING, WITH PICK UP CAP. AS AVAILABLE

KC = TAPE & REEL PACKAGING WITHOUT PICK UP CAP AND WITH HIGH RETENTION FEATURES

KV = TAPE & REEL PACKAGING WITHOUT PICK UP CAP FOR CUSTOMER DEDICATED PART
ONLY FOR P/N 77311-462KV04LF

AV = TAPE & REEL PACKAGING WITH PICK UP CAP FOR CUSTOMER DEDICATED PART

C = HIGH RETENTION FEATURES, SEE SHEET 2

V = BLIBOX PACKAGING FOR CUSTOMER DEDICATED PART. ONLY FOR 77311-4BNV01LF

R = RETENTION FEATURES, SEE BELOW

IF RETENTION FEATURE "R" AND TUBE PACKAGING "T" ARE BOTH REQUIRED

OPTIONAL LETTER "R" WILL APPEAR INSTEAD OF THE FIRST DASH

EXAMPLE : 77311R424T03LF

ERP = POLYBAG PACKAGING FOR DEDICATED CUSTOMER, WITH SPECIFIC LABEL

PLATING :

1 = 0.76µm GOLD/GXT ON CONTACT AREA, 2µm TIN MIN ON TAIL

4 = 2µm TIN MIN FULL PLATED

8 = 0.38µm GOLD/GXT ON CONTACT AREA, 2µm TIN MIN ON TAIL

G = 0.76µm FULL GXT

S = 0.38µm FULL GXT

T = 2µm TIN MIN FULL PLATED INCLUDED PIN TYP

- 1.27µm NICKEL MIN UNDERLAYER FOR ALL PLATING VERSIONS

mat'l. code				surface ISO 1302 ✓		tolerance ISO 406 ISO 1101		projection 		product family BERGSTIK				
ltr	ecn no	dr	date	tolerances unless otherwise specified						title UNSHR.HEADER STR SR TMT				
CC	F-52795	DDE	24.09.04	angles	linear									
CD	F-54440	DDE	25.01.27											
								scale N/A						
BX	F-26241	LMU	17.03.01	dr	D.LE		01.01.24			dwg no		sheet 2 of 4		size
BY	F-39392	DDE	20.12.18	engr	JM.C		01.01.24			77311				A3
CA	F-39850	DDE	23.01.13	chr	JM.C		01.01.24							
CB	F-49467	DDE	23.10.12	appd	JF.N		01.01.24							
sheet index	revision sheet													

EXTENDED RANGE

PRODUCT NUMBER (BERGSTRIIP PACKAGING)
77311-YXX-00LF

PLATING

1= 0.76µm GOLD/GXT ON CONTACT AREA, 2µm TIN MIN ON TAILS

8= 0.38µm GOLD/GXT ON CONTACT AREA, 2µm TIN MIN ON TAILS

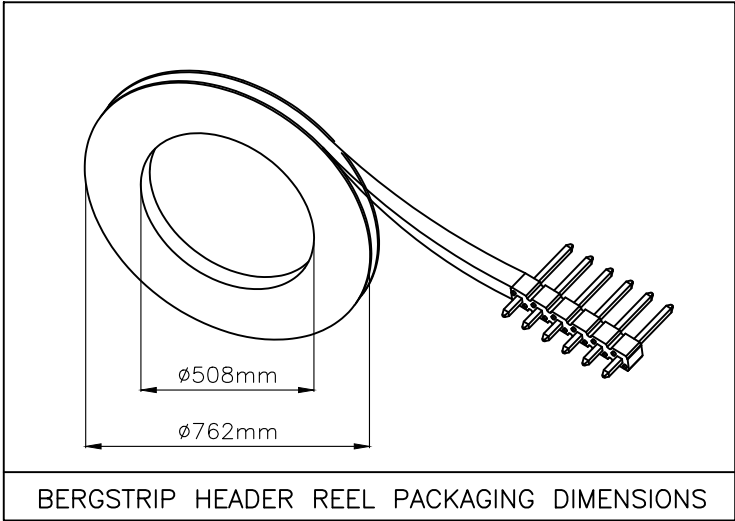
4= 2.0µm TIN MIN FULL PLATED

1.27µm NICKEL MIN UNDERLAYER FOR ALL PLATING VERSIONS

INDICATES THE PRODUCT IS RoHS COMPATIBLE, SEE NOTE 6

POSITIONS PER REEL : 00=36,000 (BERGSTRIIP)

PIN STYLE	MATING	SOLDER	OAL
01	5.84	2.41	10.8
02	5.84	3.42	11.8
18	5.84	3.05	11.43
22	7.75	3.05	13.35
24	6.75	2.9	12.2
27	6.6	2.66	11.8



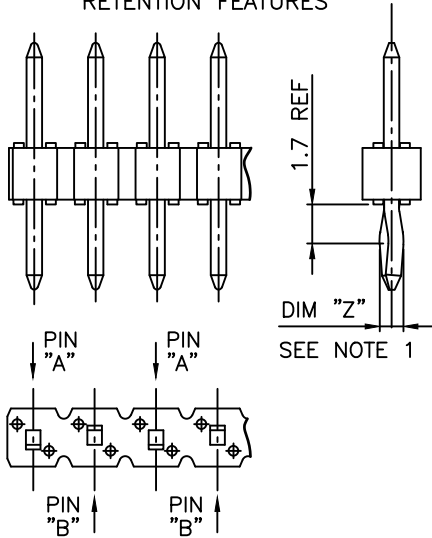
RETENTION FEATURES :

- 1 - PART NUMBER 77311-XXXXXXLF: DIM "Z"=(0.99)
PART NUMBER 77311-XXXXCXXLF: DIM "Z"= 1.05MIN -1.15MAX
- 2 - PINS "A" AND "B" USED FOR RETENTION.
- 3 - DIRECTION OF RETENTION SHOWN BY ARROWS.
- 4 - ON 4 TO 36 POSITIONS HEADER; RETENTION IS IN MID POSITION OF HEADER (4 CENTRAL PINS)
- 5 - FOR RETENTION OPTION , SOLDER TAIL LENGTH TO BE 2.9 MIN UP TO 3.5 MAX.
- 6 - HOUSING MATERIAL FOR P/N 77311-4AJC03LF & 77311-TAJC03LF HIGH TEMPERATURE THERMOPLASTIC UL94V-0 COLOR : NATURAL

PLATING SPECIFICATIONS :

- 7 - ONLY FOR PLATING 1XX, 8.0MM GOLD / GXT PLATING AREA FROM PIN TYPE ON MATING SIDE

RETENTION FEATURES



mat'l. code				surface	tolerance	projection	product family			
				ISO 1302	ISO 406 ISO 1101		BERGSTIK			
ltr	ecn no	dr	date	tolerances unless otherwise specified			title			
A	F-54440	DDE	25.01.27	angles	linear	mm	UNSHR.HEADER			
							STR SR TMT			
				dr	D.LE	01.01.24	dwg no		sheet 3 of 4	size
				enrg	JM.C	01.01.24	77311		A3	
				chr	JM.C	01.01.24	type		CUSTOMER	
				appd	JF.N	01.01.24	Drawing			
sheet index	revision	sheet								

EXTENDED RANGE

PRODUCTS SPECIFICATIONS				
PIN	STYLE	MATING	SOLDER	OAL
	01	5.84	2.41	10.8
	02	5.84	3.42	11.8
	03	5.72	5.09	13.35
	05	5.72	10.14	18.4
	08	5.72	17.78	26.04
	11	5.72	5.94	14.20
	15	8.51	2.55	13.6
	18	5.84	3.05	11.43
	19	12.83	3.03	18.4
	20	15.37	3.04	20.95
	22	7.75	3.05	13.35
	24	6.75	2.9	12.2
	25	8.51	3.18	14.22
	27	6.6	2.65	11.8
	26	15.57	2.84	20.95
	29	17.5	3.46	23.5
	32	10.3	3.05	15.9
	38	5.84	3.82	12.2
	39	11.2	3.05	16.8
	46	8.08	2.98	13.6
	54	8.08	3.81	14.43
	58	14.47	3.05	20.06
	62	13.5	3.05	19.09
	70	6.54	3.50	12.57
	83	20.46	3.00	26.00
	85	5.72	8.51	16.76
	87	6.98	3.05	12.57
	91	5.6	10.21	18.35
	92	5.65	12.76	20.95
	93	6.00	4.81	13.35
	94	15.60	3.20	21.25
	95	10.00	8.45	20.95
	96	10.95	3.05	16.55
	97	9.00	3.55	15.09
	98	3.00	1.35	6.84
	99	24.00	3.05	29.50
	AA	5.72	15.24	23.50
	AB	N/A		

PRODUCTS SPECIFICATIONS				
PIN	STYLE	MATING	SOLDER	OAL
	AC	7.21	3.05	12.80
	AD	17.53	3.43	23.50
	AE	4.99	2.80	10.33
	AF	5.72	3.05	11.30
	AG	5.84	4.95	13.33
	AH	14.31	3.20	20.05
	AJ	8.90	3.40	14.85
	AK	25.06	3.00	30.80
	AL	3.30	3.30	9.14
	AM	9.26	3.05	14.85
	AN	7.60	4.40	14.47
	AP	7.80	3.30	13.60
	AR	18.86	2.41	23.81
	AS	11.91	1.45	15.90
	AT	4.60	4.60	11.61
	AU	12.10	3.10	17.70
	AV	6.30	6.30	15.10
	AW	9.16	1.80	13.50
	AX	5.08	2.43	10.05
	AY	7.49	3.47	13.50
	BA	8.08	2.75	13.37
	BB	10.80	2.15	15.50
	BC	8.08	3.81	14.43
	BD	10.10	2.16	14.80
	BE	13.65	2.41	18.60
	BF	2.54	5.32	10.40
	BG	4.98	1.85	9.23
	BH	4.69	2.41	9.50
	BJ	7.21	6.15	15.90
	BK	6.86	2.65	12.05
	BL	17.70	3.25	23.50
	BM	10.96	3.70	16.20
	BN	19.46	3.00	25.00
	BP	8.80	3.20	14.50
	BR	19.46	4.00	26.00
	BS	5.72	11.05	19.30
	BT	8.50	5.36	16.40
	BU	3.80	3.80	10.14
	BV	5.08	2.79	10.40
	BW	7.36	2.30	12.20

NOTE 6

[illegible][illegible]