

Features

- High Capacity General Purpose
- 1A and 2A contact options available
- Wide range of coil voltage
- UL/CUL, TÜV certified



Contact Data*

UL Contact Rating	25A @ 30VDC Resistive, 6K cycles, 60°C 30A @ 277VAC Resistive, 100K cycles, 40°C 1.5kW @ 120VAC Tungsten, 6K cycles, 40°C 1.5hp @ 120VAC 1K cycles, 60°C 3hp@277VAC 100K cycles 40°C 20FLA / 120LRA @ 120VAC 30K cycles, 40°C 17FLA / 102LRA @ 277VAC 30K Cycles, 40°C TV-10, 120VAC 25K Cycles, 40°C
TÜV Contact Rating	25A @ 277VAC Resistive, 100K cycles, 55°C 25A @ 277VAC Inductive pf .4, 50K cycles 55°C

Contact Arrangement	1A = SPST N.O. 2A = DPST N.O.
Contact Resistance	< 50 milliohms initial
Contact Material	AgSnO ₂ In ₂ O ₃
Maximum Switching Power	1A = 6600VA 2A = 5500VA
Maximum Switching Voltage	277VAC, 30VDC
Maximum Switching Current	30A

Coil Data DC Parameters*

Coil Voltage VDC		Coil Resistance Ω +/- 10%	Pick Up Voltage VDC (max) 70% of rated voltage	Release Voltage VDC (min) 10% of rated voltage	Coil Power W	Operate Time ms	Release Time ms
Rated	Max						
6	7.8	19	4.2	0.6	1.9	≤30	≤30
12	15.6	75	8.4	1.2			
24	31.2	303	16.8	2.4			
48	62.4	1220	33.6	4.8			
110	143.0	6360	77.0	11.0			
220	286.0	25474	154.0	22.0			

Coil Data AC Parameters*

Coil Voltage VAC		Coil Resistance Ω +/- 10%	Pick Up Voltage VAC (max) 70% of rated voltage	Release Voltage VAC (min) 10% of rated voltage	Coil Power VA	Operate Time ms	Release Time ms
Rated	Max						
6	7.8	14	4.2	0.6	2.5	≤30	≤30
12	15.6	55	8.4	1.2			
24	31.2	275	16.8	2.4			
48	62.4	1100	33.6	4.8			
100~120	143.0	5200	70.0	10.0			
200~240	286.0	21000	140.0	20.0			
380	494.0	62650	266.0	38.0			

General Data*

Electrical Life @ rated load	100K cycles, typical
Mechanical Life	500K cycles, typical
Insulation Resistance	1000M Ω min. @ 500VDC
Dielectric Strength	Coil to Contact Contact to Contact Between Poles
	4000V rms min. @ sea level 2000V rms min. @ sea level 2000V rms min. @ sea level
Shock Resistance	10G, half-sine shock pulse, 11 ms
Vibration Resistance	1.50mm double amplitude 10~55Hz
Operating Temperature	-40°C to 85°C
Storage Temperature	-40°C to 85°C
Solderability	260°C for 5 s
Weight	120g

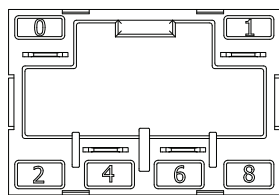
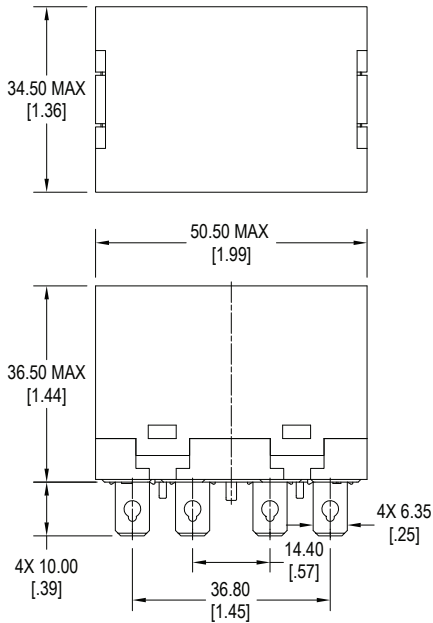
* Values can change due to the switching frequency, desired reliability levels, environmental conditions and in-rush load levels. It is recommended to test actual load conditions for the application. It is the user's responsibility to determine the performance suitability for their specific application. The use of any coil voltage less than the rated coil voltage may compromise the operation of the relay.

Ordering Information

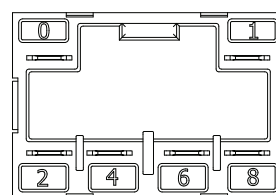
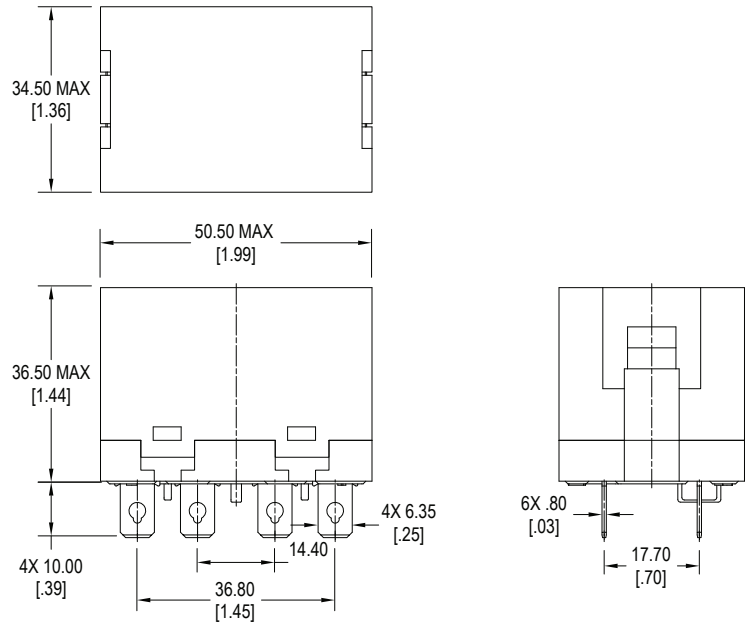
1. Series	J167	1A	C	12VDC	Q
J167					
2. Contact Arrangement	1A = SPST N.O. 2A = DPST N.O.				
3. Cover Option	C = Standard Cover <i>PC Pin and Quick Connect Terminals ONLY</i> F = Flange Cover D = DIN Rail				
4. Coil Voltage	6VDC 6VAC 12VDC 12VAC 24VDC 24VAC 48VDC 48VAC 110VDC 120VAC (100~120VAC) 220VDC 240VAC (200~240VAC) 380VAC				
5. Terminals	Z = Screw Terminals <i>LED Option REQUIRED</i> Q = .250" Quick Connect Terminals <i>No LED Option</i> P = PC Pin Terminals <i>No LED Option</i>				
6. LED Option	<i>only available with Screw Terminals</i> Blank = Without indicator LED D = With indicator LED <i>COVER REQUIRED</i> : choose "F" Flange Cover or "D" DIN Rail cover option				
7. Push-To-Test Option	Blank = Without Push-To-Test button T = With Push-To-Test button				
8. Contact Material	Blank = AgSnO ₂ In ₂ O ₃				

Dimensions

Units = mm



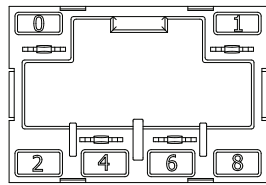
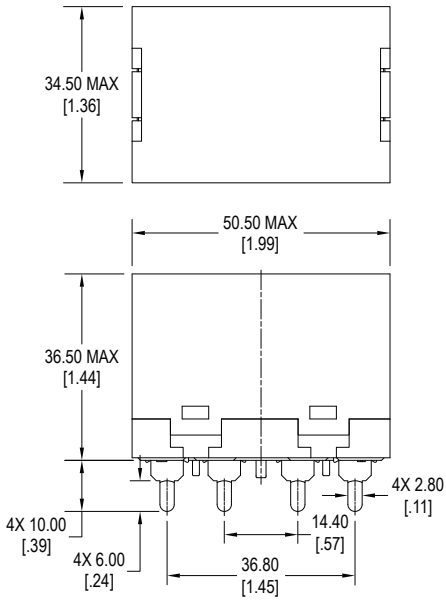
1A Standard Cover, Quick Connect Terminals



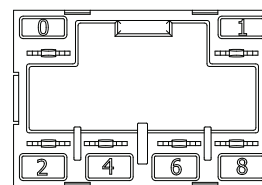
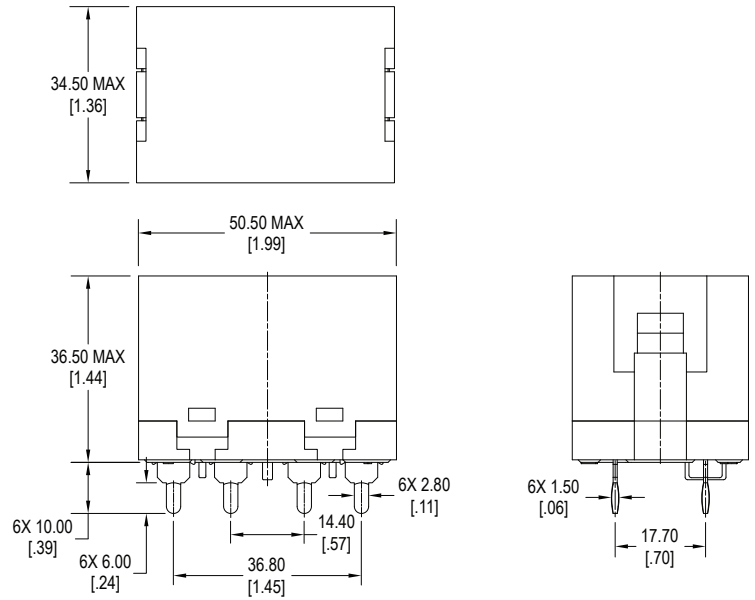
2A Standard Cover, Quick Connect Terminals

Dimensions

Units = mm



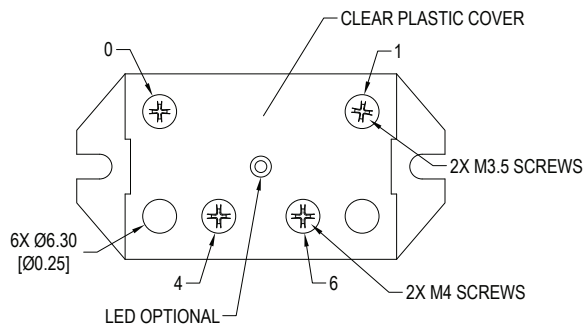
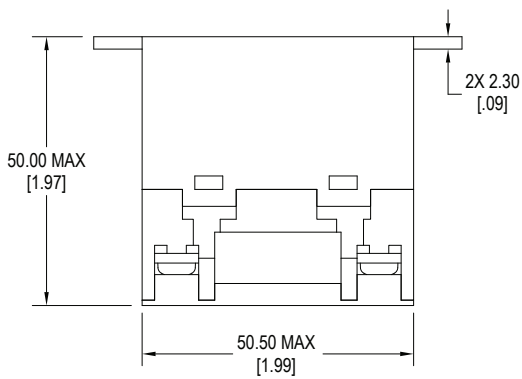
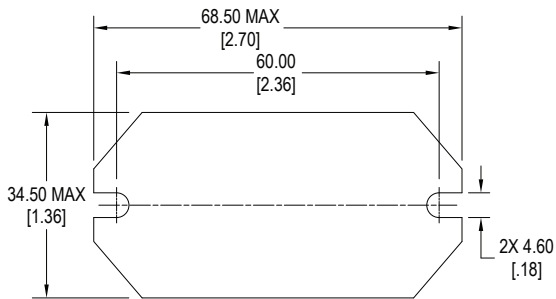
1A Standard Cover, PC Pin Terminals



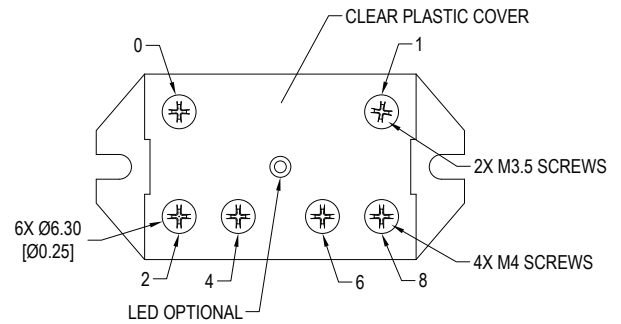
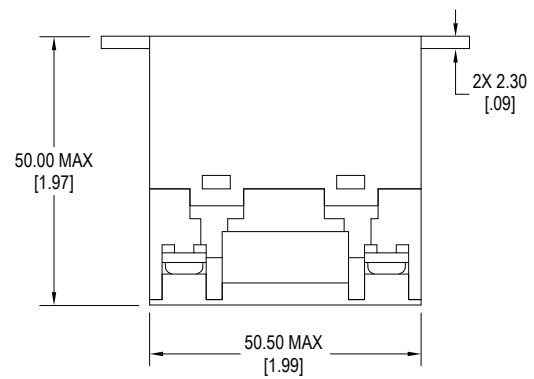
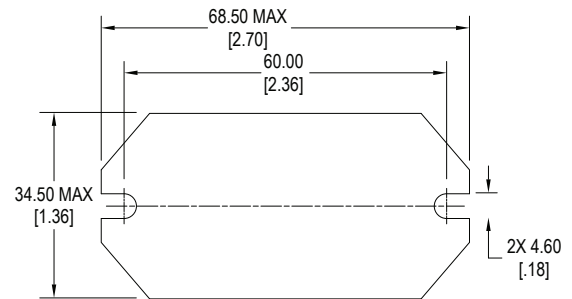
2A Standard Cover, PC Pin Terminals

Dimensions

Units = mm



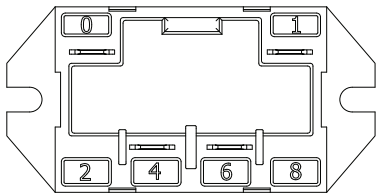
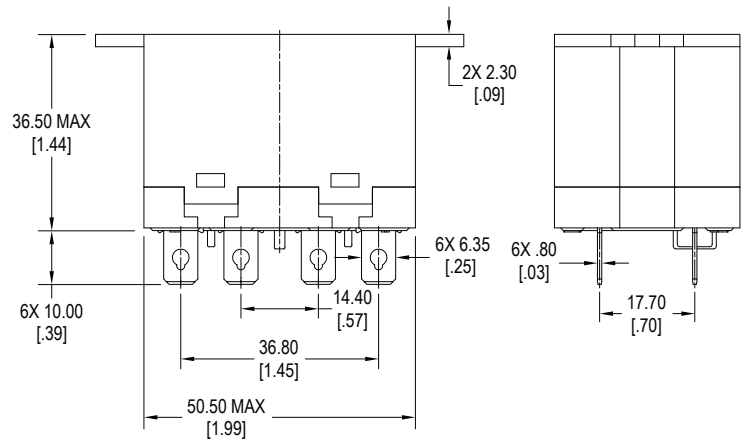
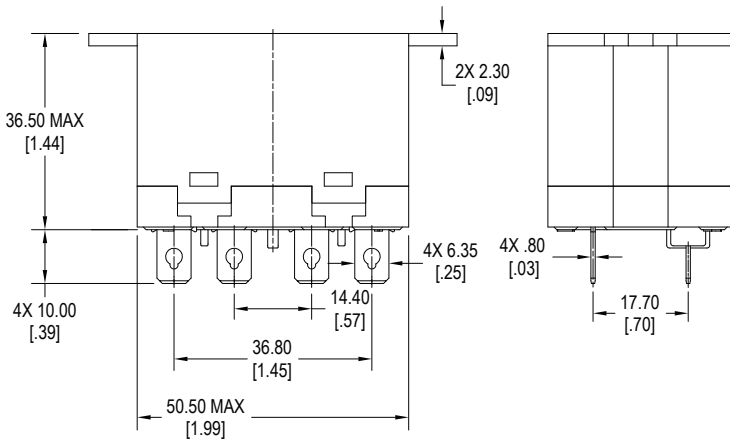
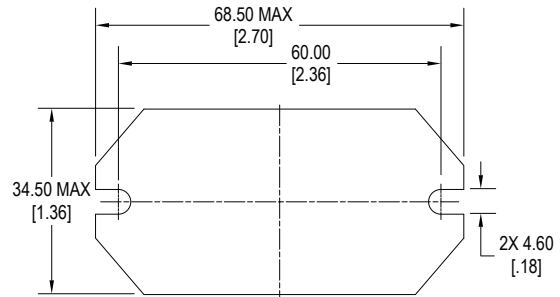
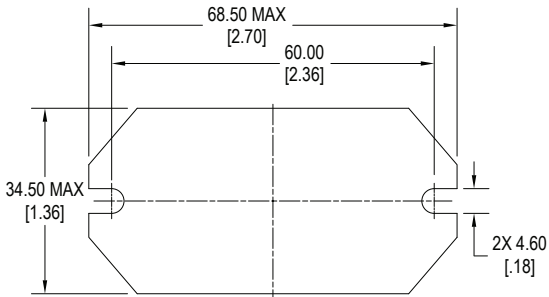
1A Flange Cover, Screw Terminals



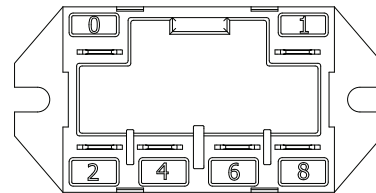
2A Flange Cover, Screw Terminals

Dimensions

Units = mm



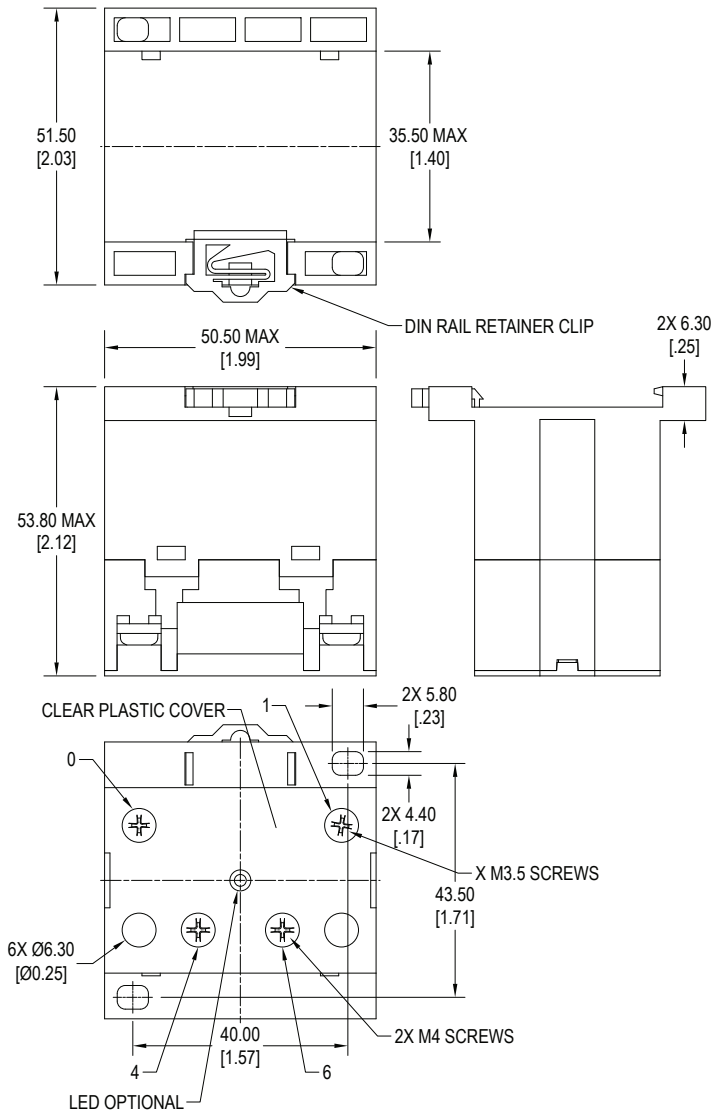
1A Flange Cover, Quick Connect Terminals



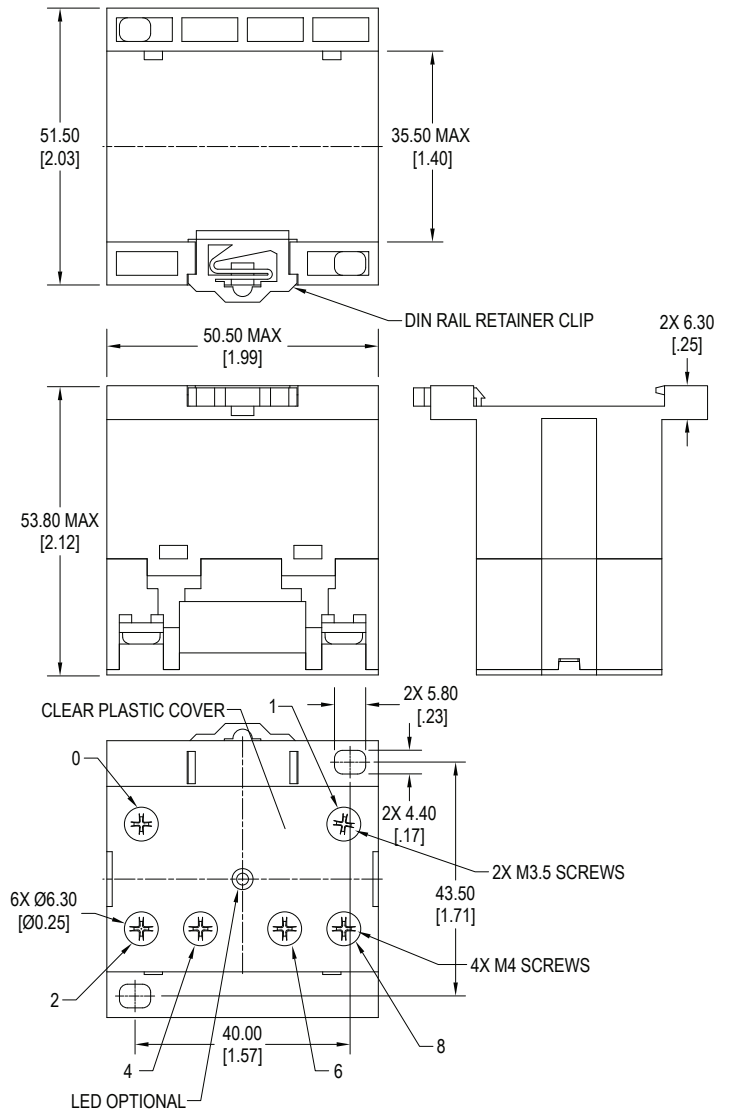
2A Flange Cover, Quick Connect Terminals

Dimensions

Units = mm



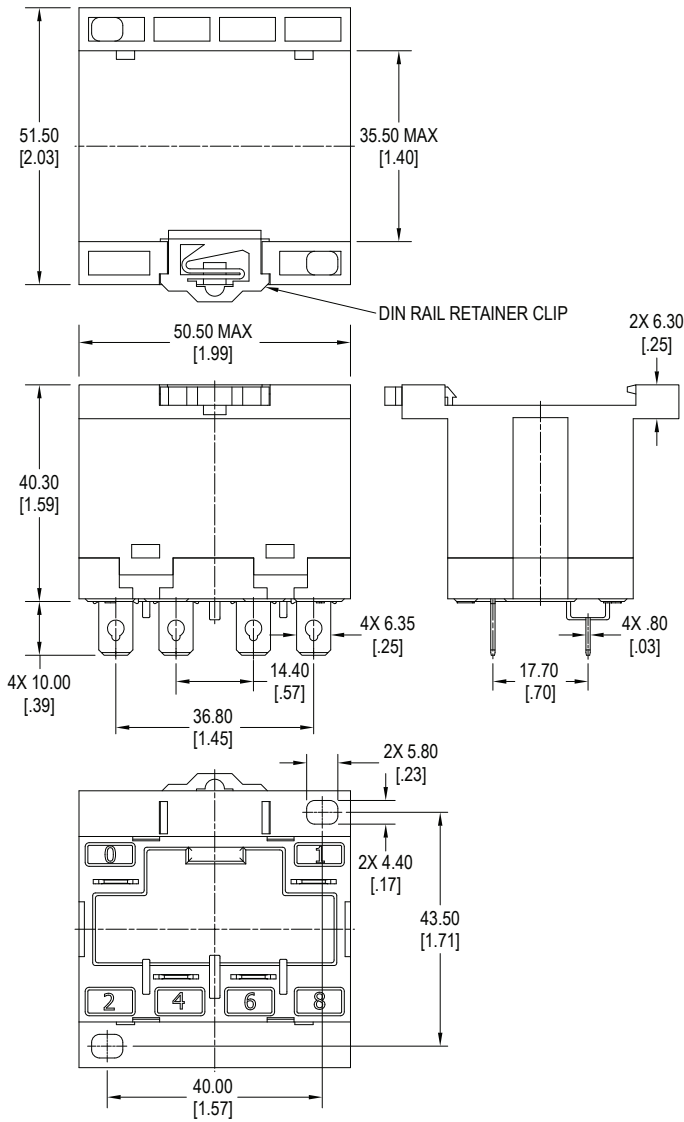
1A DIN Rail Cover, Screw Terminals



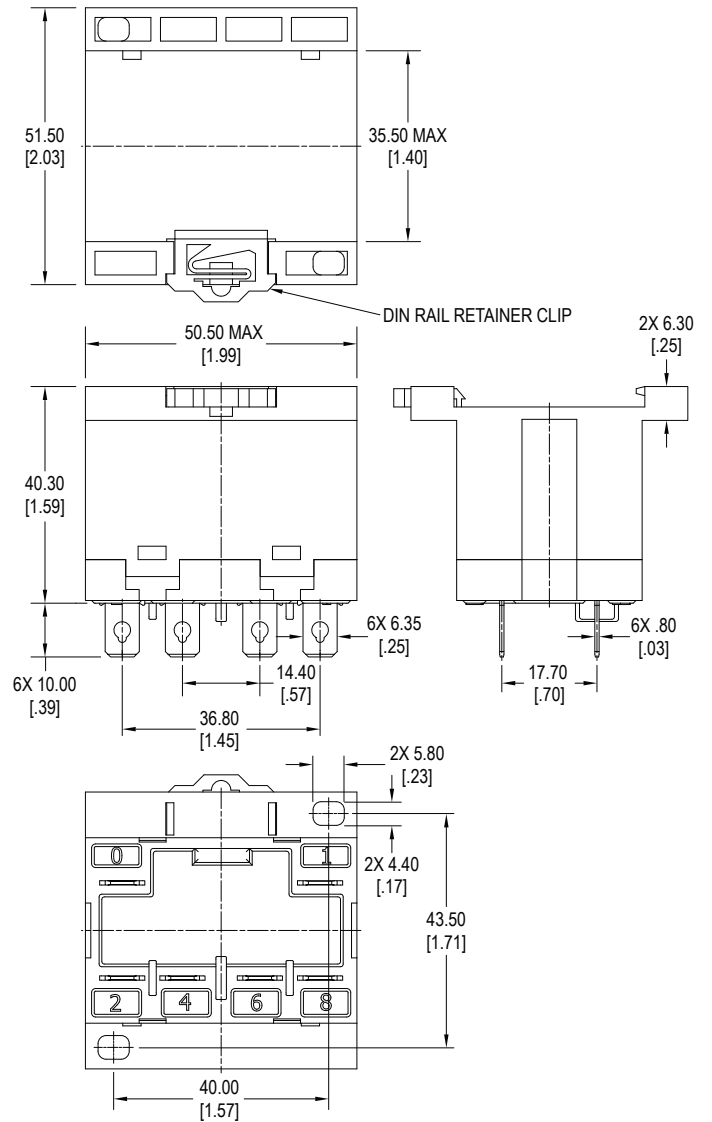
2A DIN Rail Cover, Screw Terminals

Dimensions

Units = mm



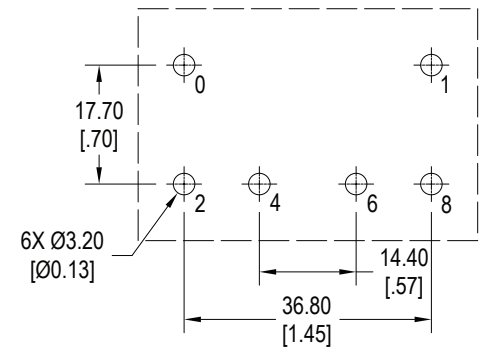
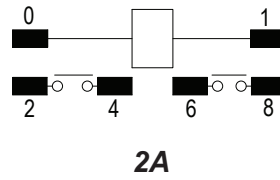
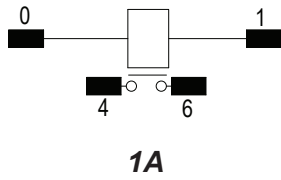
1A DIN Rail Cover, Quick Connect Terminals



2A DIN Rail Cover, Quick Connect Terminals

Schematics & PC Layouts

Bottom Views



Test Button

