

GlobTek, Inc. www.globtek.com 186 Veterans Drive, Northvale, NJ 07647 Tel. (201) 784-1000 Fax (201) 784-0111	Drawing Title: USB Type C, 24PIN, FEMALE, UPRIGHT TYPE, GEN2	
	Model No. Connector	
	Part No./Ordering No. PLUG-USBC-24PINF-C24Z11	Rev A

In Addition to GlobTek Inc.'s renewed ISO9001:2008 - Quality Management System Certification, GlobTek Inc. is now certified to:

ISO13485:2003 - Medical Devices Quality Management System Certification

ISO14001:2004 - Environmental Management System Certification

ISO Certificates are available online at <http://www.globtek.com/iso-certificates/>

The acceptance of this specification and use of the product described in this document indicates the acceptance and binding of the customer to Globtek TERMS AND CONDITIONS (attached to the end of this document), which supersede all other agreements, terms, and conditions (<http://www.globtek.com/terms-and-conditions/>).

Prop 65 Statement:<https://www.globtek.com/prop-65-statement.pdf>

Footnote:

GlobTek Inc. will not be liable for the safety and performance of these power supplies if unauthorized access and repair occurs. End user should consult applicable UL, CSA or EN standards for proper installation instruction.

Limitation of Use:

GlobTek products are intended for use with commercial, medical, and/or industrial equipment only. GlobTek product are not authorized for use as mission critical components in life support hazardous environment, nuclear or aircraft applications without prior written approval from the CEO of GlobTek Inc.

Contents of this document are subject to change without prior notice.

Customer Approval of Specification:

Please approve, sign and send back to GlobTek so we can complete order processing.

A delay in receipt of this form will delay delivery schedule.

Company Name:

Customer P/N:

Quote Number:

Date:

Authorized Representative Name:

Authorized Representative Signature:

GlobTek, Inc. www.globtek.com 186 Veterans Drive, Northvale, NJ 07647 Tel. (201) 784-1000 Fax (201) 784-0111	Drawing Title: USB Type C, 24PIN, FEMALE, UPRIGHT TYPE, GEN2		
	Model No. Connector	Part No./Ordering No. PLUG-USBC-24PINF-C24Z11	
			Rev A

REVISION HISTORY

REV	DESCRIPTION	SUB	DATE	APPROVED
A	Initial release	QA	11/03/2023	QA

AGENCY ONLINE DOCUMENTS

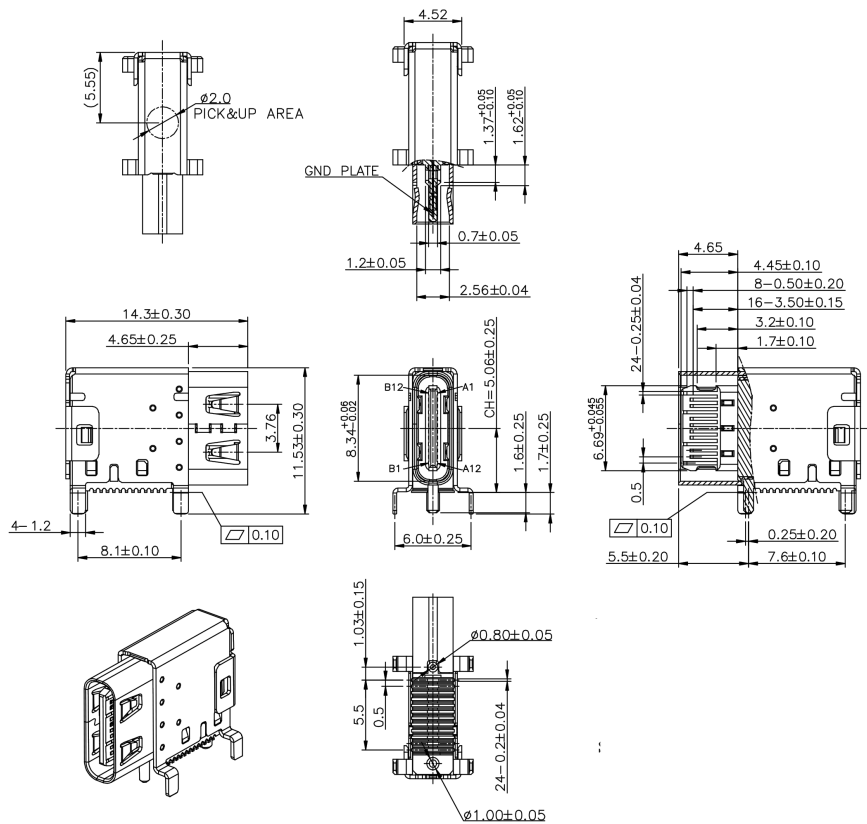
RoHS/RoHS3 Declaration https://www.globtek.com/pdf/rohs_cert/01t3a000005RQFMAA4

REACH Declaration <https://www.globtek.com/r2/eM2co8>

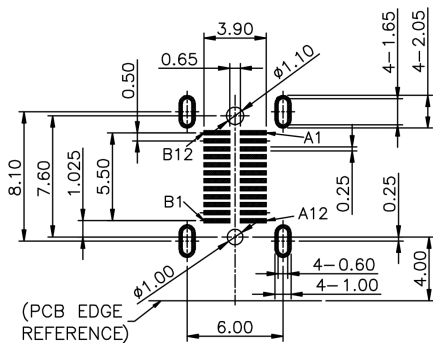
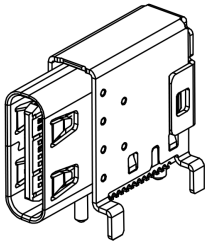
Conflict Minerals Declaration <https://www.globtek.com/r2/SNw6P3>

Prop 65 Statement <https://www.globtek.com/r2/VMPRnr>

IPXY rating is based on 3rd party testing and customers should check suitability and test system level IPXY rating before ordering.



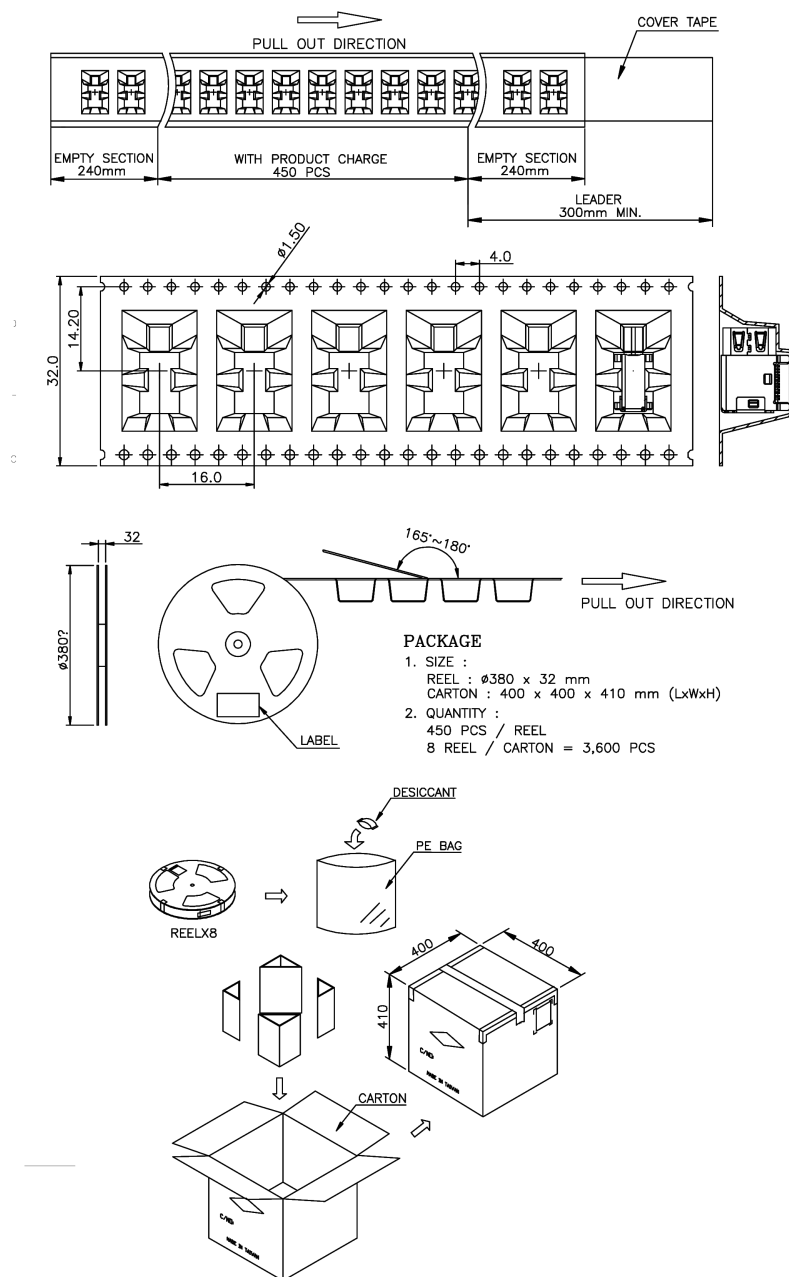
GlobTek, Inc. www.globtek.com 186 Veterans Drive, Northvale, NJ 07647 Tel. (201) 784-1000 Fax (201) 784-0111	Drawing Title: USB Type C, 24PIN, FEMALE, UPRIGHT TYPE, GEN2	
	Model No. Connector	
	Part No./Ordering No. PLUG-USBC-24PINF-C24Z11	Rev A



PIN ASSIGNMENT:

PIN	Signal Name	PIN	Signal Name
A1	GND	B12	GND
A2	SSTXp1	B11	SSRXp1
A3	SSTXn1	B10	SSRXn1
A4	Vbus	B9	Vbus
A5	CC1	B8	SBU2
A6	Dp1	B7	DN2
A7	Dn1	B6	DP2
A8	SBU1	B5	CC2
A9	Vbus	B4	Vbus
A10	SSRXn2	B3	SSTXn2
A11	SSRXp2	B2	SSTXp2
A12	GND	B1	GND

GlobTek, Inc. www.globtek.com 186 Veterans Drive, Northvale, NJ 07647 Tel. (201) 784-1000 Fax (201) 784-0111	Drawing Title: USB Type C, 24PIN, FEMALE, UPRIGHT TYPE, GEN2 Model No. Connector Part No./Ordering No. PLUG-USBC-24PINF-C24Z11 Rev A
---	---



PROPRIETARY INFORMATION

PROPRIETARY OF GLOBTEK, INC. ANY REPRODUCTION, DISCLOSURE OR USE OF THIS DRAWING, IN WHOLE OR IN PART, IS HEREBY PROHIBITED EXCEPT AS SPECIFIED IN WRITING BY GLOBTEK, INC. © GlobTek, Inc. 2023 - 2024
quest /09/28/2024 7:47:18 PM CLONED FROM 208IN4261M5712B(R)

GlobTek, Inc. www.globtek.com 186 Veterans Drive, Northvale, NJ 07647 Tel. (201) 784-1000 Fax (201) 784-0111	Drawing Title: USB Type C, 24PIN, FEMALE, UPRIGHT TYPE, GEN2	
	Model No. Connector	
	Part No./Ordering No. PLUG-USBC-24PINF-C24Z11	Rev A

MATERIALS

- 1. HOUSING: LCP (UL 94V-0), BLACK
- 2. TERMINAL: COOPER ALLOY
- GOLD PLATED ON CONTACT AREA
- GOLD FLASH PLATING ON SOLDER TAIL
- NICKEL UNDERPLATED OVER ALL
- 3. MID PLATE: STAINLESS STEEL
- 4. SHELL: STAINLESS STEEL, NICKEL PLATING

SPECIFICATION

- 1. CURRENT RATING:
 - 5.0A FOR Vbus PINS
 - 6.25A FOR GND PINS
 - 1.25A FOR Vcon PINS
 - 0.25A FPR OTHER PINS
- 2. VOLTAGE RATING: 48VDC
- 3. POWER RATING: 240W
- 4. CONTACT RESISTANCE
 - 40mΩ MAX INITIAL
 - 50mΩ MAX AFTER TEST
- 5. INITIAL RESISTANCE: 100mΩ MIN
- 6. DIELECTRIC WITHSTANDING VOLTAGE: 100VAC MIN.
- 7. OPERATING TEMPERATURE: -40°C TO +85°C
- 8. MATING FORCE: 5~20N
- 9. UNMATING FORCE: 8~20N
- 10. DURABILITY: 10,000CYCLES
- 11. RECOMMENDED PROCESS: THE PEAK TEMPERATURE ON THE BOARD SHALL MAINTAIN 260°C

GlobTek, Inc. www.globtek.com 186 Veterans Drive, Northvale, NJ 07647 Tel. (201) 784-1000 Fax (201) 784-0111	Drawing Title: USB Type C, 24PIN, FEMALE, UPRIGHT TYPE, GEN2	
	Model No. Connector	
	Part No./Ordering No. PLUG-USBC-24PINF-C24Z11	Rev A

PACKAGING

Packing Spec P/N:	
Box Qty:	3600
Gift Box Size (mm):	
Gift Box Color:	White
Master Carton Size (mm):	400 x 400 x 410
Master Carton Cubic Volume (m³): 0.07	
Master GW (Kg):	kg
wt Ea. (Kg):	kg
wt Ea. (Kg):	kg
LABEL SPECS: ,	
PACK SPEC:	